

Activity Name	Original Duration	Start	Finish	2013				2014				2015				2016				2017				2018	
				Q1	Q2	Q3	Q4	Q1	Q2	Q3	Q4	Q1	Q2	Q3	Q4	Q1	Q2	Q3	Q4	Q1	Q2	Q3	Q4	Q1	Q2
Priority N-1: Hodge ES - Replacement (\$17,648,200)	519	02-Jan-13 A	02-Jan-15 A																						
A/E Procurement	58	02-Jan-13 A	22-Mar-13 A																						
CMR Procurement	128	02-Jan-13 A	28-Jun-13 A																						
Design	169	25-Mar-13 A	15-Nov-13 A																						
Permit/Bidding	148	03-Jun-13 A	27-Dec-13 A																						
Pre-Construction Services	99	01-Jul-13 A	15-Nov-13 A																						
Construction	259	18-Nov-13 A	15-Dec-14 A																						
Move-in & Occupancy	24	01-Dec-14 A	02-Jan-15 A																						
Priority N-2: Hesse K - 8 - Replacement (\$28,723,000)	1063	02-Jan-13 A	30-Nov-15 A																						
A/E Procurement	113	02-Jan-13 A	07-Jun-13 A																						
CMR Procurement	187	02-Jan-13 A	20-Sep-13 A																						
Design/Permitting	233	10-Jun-13 A	02-May-14 A																						
Pre-Construction Services	169	09-Sep-13 A	02-May-14 A																						
Bid/Construction	326	14-Apr-14 A	15-Jul-15 A																						
Demolition/Sitework	183	01-Jun-15 A	30-Nov-15 A																						
Move-in & Occupancy	25	25-Jun-15 A	29-Jul-15 A																						
Priority N-3: Isle of Hope K - 8 - Replacement (\$23,000,000)	944	02-Jan-13 A	03-Aug-15 A																						
A/E Procurement	170	02-Jan-13 A	28-Aug-13 A																						
CMR Procurement	177	02-Jan-13 A	13-Sep-13 A																						
Relocate to IOH Temporary Facility	656	12-Aug-13 A	29-May-15 A																						
Design/Permitting	163	29-Aug-13 A	15-Apr-14 A																						
Pre-Construction Services	156	09-Sep-13 A	15-Apr-14 A																						
Bid/Construction	340	13-Mar-14 A	03-Jul-15 A																						
Move-in & Occupancy	30	23-Jun-15 A	03-Aug-15 A																						
Priority A-1: Heard ES - Classrm (PH 1) & Cafe (PH 2)	1094	02-Jan-13 A	31-Dec-15 A																						
PH 1:Design	55	02-Jan-13 A	19-Mar-13 A																						
PH 1:Bid/Construction	280	19-Apr-13 A	21-Feb-14 A																						
PH 2:Design	187	10-Jul-13 A	25-Apr-14 A																						
PH 1:Move-in & Occupancy	30	24-Feb-14 A	14-Mar-14 A																						
PH 2:Bid/Construction - Additions	348	31-Mar-14 A	31-Jul-15 A																						
PH 2: Renovation	214	01-Jun-15 A	31-Dec-15 A																						
PH 2:Move-in & Occupancy	22	01-Dec-15 A	31-Dec-15 A																						
Priority A-2: Coastal MS - Gym Addition (\$3,783,200)	899	02-Jan-13 A	19-Jun-15 A																						

■ Baseline Schedule ■ Work in Progress or Remaining
■ Completed Activity ■ Critical Remaining Work

Savannah-Chatham County Public School System

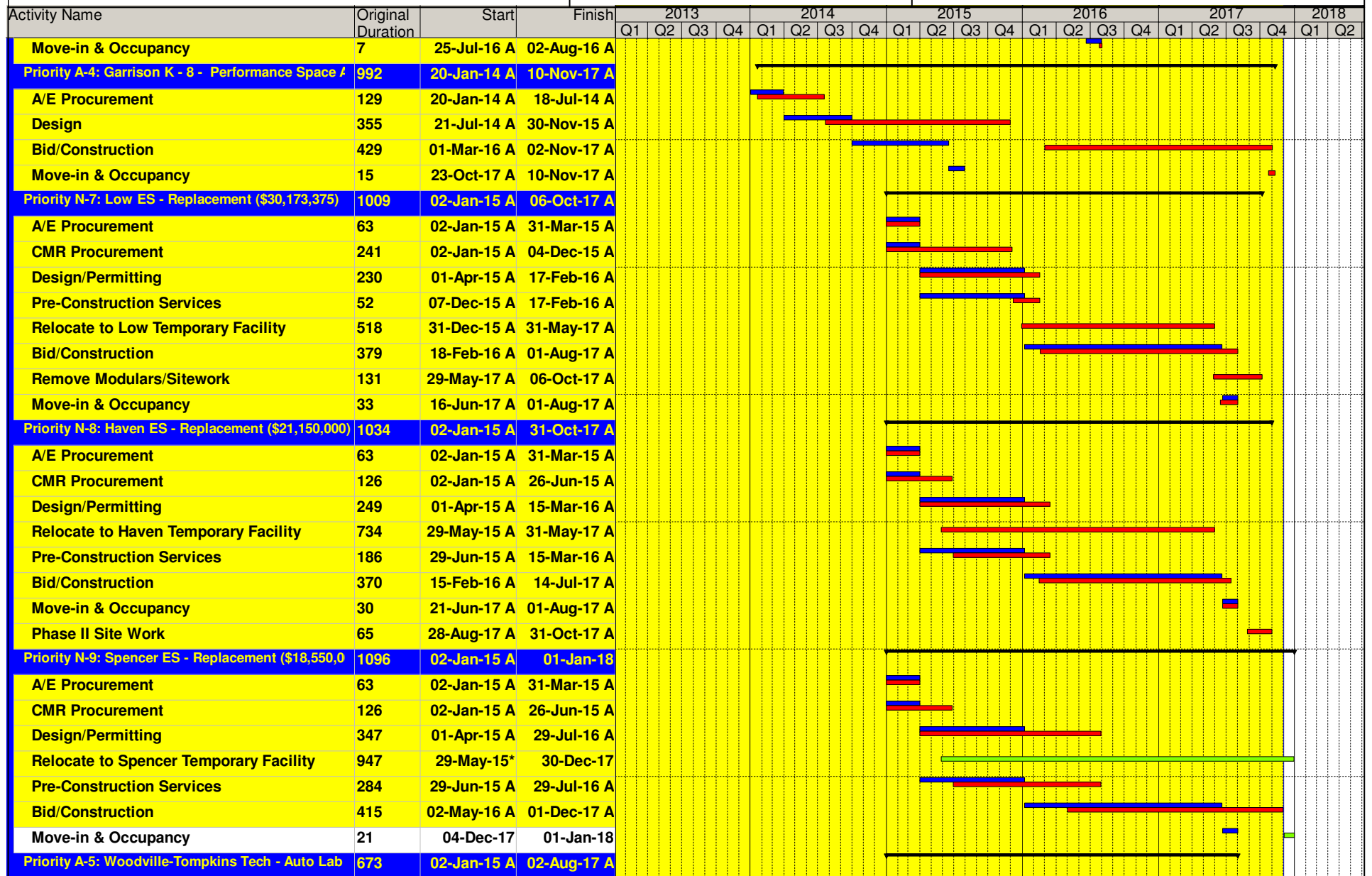
December 2017

Activity Name	Original Duration	Start	Finish	2013				2014				2015				2016				2017				2018	
				Q1	Q2	Q3	Q4	Q1	Q2	Q3	Q4	Q1	Q2	Q3	Q4	Q1	Q2	Q3	Q4	Q1	Q2	Q3	Q4	Q1	Q2
A/E Procurement	172	02-Jan-13 A	30-Aug-13 A																						
Design	104	02-Sep-13 A	24-Jan-14 A																						
Bid/Construction	293	27-Jan-14 A	13-Mar-15 A																						
Move-in & Occupancy	10	16-Mar-15 A	27-Mar-15 A																						
Renovations	82	30-Mar-15 A	19-Jun-15 A																						
Priority A-3: Islands HS - Gym & Classroom Additi	1519	02-Jan-13 A	22-Feb-17 A																						
A/E Procurement	172	02-Jan-13 A	30-Aug-13 A																						
Design	149	02-Sep-13 A	28-Mar-14 A																						
Bid/Construction	328	24-Mar-14 A	26-Jun-15 A																						
Cafe Renovations	64	27-Jun-15 A	29-Aug-15 A																						
Move-in & Occupancy	10	29-Jun-15 A	10-Jul-15 A																						
Auditorium Addition	394	01-Feb-16 A	22-Feb-17 A																						
Priority N-4: Howard ES - Replacement (\$25,155,1t	1395	06-Jan-14 A	31-Oct-17 A																						
A/E Procurement	63	06-Jan-14 A	02-Apr-14 A																						
CMR Procurement	68	03-Feb-14 A	07-May-14 A																						
Design/Permitting	352	23-Apr-14 A	31-Aug-15 A																						
Pre-Construction Services	341	08-May-14 A	31-Aug-15 A																						
Bid/Construction	498	01-Sep-15 A	28-Jul-17 A																						
Demolition/Sitework	149	05-Jun-17 A	31-Oct-17 A																						
Move-in & Occupancy	15	10-Jul-17 A	28-Jul-17 A																						
Priority N-5: Rice Creek - Replacement (\$29,404,97	554	26-Jun-13 A	14-Aug-15 A																						
A/E Procurement	12	26-Jun-13 A	12-Jul-13 A																						
CMR Procurement	73	01-Jul-13 A	10-Oct-13 A																						
Design/Permitting	181	15-Jul-13 A	30-Apr-14 A																						
Pre-Construction Services	117	11-Oct-13 A	30-Apr-14 A																						
Bid/Construction	298	12-May-14 A	03-Jul-15 A																						
Move-in & Occupancy	30	06-Jul-15 A	14-Aug-15 A																						
Priority N-6: Brock ES - Replacement (\$20,664,000)	703	06-Jan-14 A	19-Sep-16 A																						
A/E Procurement	63	06-Jan-14 A	02-Apr-14 A																						
CMR Procurement	68	03-Feb-14 A	07-May-14 A																						
Design/Permitting	240	28-Apr-14 A	31-Mar-15 A																						
Pre-Construction Services	232	08-May-14 A	31-Mar-15 A																						
Bid/Construction	318	01-Jul-15 A	19-Sep-16 A																						

Baseline Schedule
 Work in Progress or Remaining
 Completed Activity
 Critical Remaining Work

Savannah-Chatham County Public School System

December 2017



■ Baseline Schedule ■ Work in Progress or Remaining
■ Completed Activity ■ Critical Remaining Work

Activity Name	Original Duration	Start	Finish	2013				2014				2015				2016				2017				2018	
				Q1	Q2	Q3	Q4	Q1	Q2	Q3	Q4	Q1	Q2	Q3	Q4	Q1	Q2	Q3	Q4	Q1	Q2	Q3	Q4	Q1	Q2
A/E Procurement	91	02-Jan-15 A	08-May-15 A									■	■	■	■										
Design	174	11-May-15 A	08-Jan-16 A									■	■	■	■										
Bid/Construction	383	15-Feb-16 A	02-Aug-17 A													■	■	■	■	■	■	■	■		
Move-in & Occupancy	7	24-Jul-17 A	01-Aug-17 A																						
Priority A-6: Hubert MS - Kitchen/Cafe Upgrade (\$)	643	20-Jan-14 A	11-Jul-16 A					■	■	■	■	■	■	■	■										
A/E Procurement	95	20-Jan-14 A	09-Sep-14 A					■	■	■	■														
Design	187	10-Sep-14 A	29-May-15 A									■	■	■	■										
Bid/Construction	281	01-May-15 A	30-May-16 A													■	■	■	■	■	■	■	■		
Move-in & Occupancy	30	31-May-16 A	11-Jul-16 A																						
Priority A-7: White Bluff ES - Classroom Addition	63	14-Nov-16 A	08-Feb-17 A																						
Project Removed from E2	63	14-Nov-16 A	08-Feb-17 A																						
Priority A-8: Largo-Tibet ES - Kitchen/Cafe/Media	63	04-Jan-16 A	30-Mar-16 A									■	■	■	■										
Project Removed from E2	63	04-Jan-16 A	30-Mar-16 A									■	■	■	■										

■ Baseline Schedule ■ Work in Progress or Remaining
■ Completed Activity ■ Critical Remaining Work